



**Wavelink Avalanche MC
Reporting Tool
Reference Guide**

wl-amc-rg-reports-42-20070413-03

Revised 4/13/07

Copyright © 2007 by Wavelink Corporation All rights reserved.

Wavelink Corporation
6985 South Union Park Avenue, Suite 335
Midvale, Utah 84047
Telephone: (801) 316-9099
Fax: (801) 255-9699
Email: customerservice@wavelink.com
Website: <http://www.wavelink.com>

Email: sales@wavelink.com

No part of this publication may be reproduced or used in any form, or by any electrical or mechanical means, without permission in writing from Wavelink Corporation. This includes electronic or mechanical means, such as photocopying, recording, or information storage and retrieval systems. The material in this manual is subject to change without notice.

The software is provided strictly on an “as is” basis. All software, including firmware, furnished to the user is on a licensed basis. Wavelink grants to the user a non-transferable and non-exclusive license to use each software or firmware program delivered hereunder (licensed program). Except as noted below, such license may not be assigned, sublicensed, or otherwise transferred by the user without prior written consent of Wavelink. No right to copy a licensed program in whole or in part is granted, except as permitted under copyright law. The user shall not modify, merge, or incorporate any form or portion of a licensed program with other program material, create a derivative work from a licensed program, or use a licensed program in a network without written permission from Wavelink. The user agrees to maintain Wavelink’s copyright notice on the licensed programs delivered hereunder, and to include the same on any authorized copies it makes, in whole or in part. The user agrees not to decompile, disassemble, decode, or reverse engineer any licensed program delivered to the user or any portion thereof.

Wavelink reserves the right to make changes to any software or product to improve reliability, function, or design.

The information in this document is bound by the terms of the end user license agreement.

Table of Contents

Chapter 1: Avalanche MC Reporting Tool	3
Introduction	3
Document Conventions	3
About Avalanche MC Reporting Tool	4
Installation	5
Installation Requirements	5
Hardware Requirements	5
Software Requirements	6
Installing Avalanche MC Reporting Tool	6
Avalanche MC Report Console	8
Accessing the Report Console	9
Scheduled Reports	10
Reports Now Available	10
Report Preferences	10
Chapter 2: Building Reports	13
Mobile Device Inventory Report	13
Mobile Device Summary Report	17
Infra Device Inventory Report	18
Software Profile Report	20
Software Profile Status Report	21
Event Summary Report	22
Access Point Associations Report	24
Mobile Device Roaming Report	25
Battery Summary Report	26
Mobile Device Statistics Report	28
Chapter 3: Viewing and Exporting Reports	31
Viewing Reports	31
General Report Information	32
Header Information	32
Graphs	32
Mobile Device Inventory Report	32
Mobile Device Summary Report	33
Infra Device Inventory Report	33
Software Profile Report	33
Software Profile Status Report	34
Event Summary Report	34
Access Point Associations Report	34
Mobile Device Roaming Report	35
Battery Summary Report	35
Mobile Device Statistics Report	36
Exporting Reports	36

Index

37

Chapter 1: Avalanche MC Reporting Tool

This document provides information about the Avalanche MC Reporting Tool. The Reporting Tool consists of a Web-based interface that provides important network inventory, health, and status information. You can schedule when to run reports, store reports for later viewing, and export reports to a PDF format.

This chapter provides the following information:

- Introduction
- Installation
- Avalanche MC Report Console

Introduction

This section provides information about document conventions and gives an overview of the Reporting Tool.

Document Conventions

The following section contains information about text-formatting conventions in this manual.

Table 1 lists the conventions that are used in this manual.

Convention	Description
<code>courier new</code>	<p>Any time you interact directly with text-based user interface options, such as a button, or type specific information into an text box, such as a file pathname, that option appears in the <code>Courier New</code> text style. This text style is also used for keys that you press, filenames, directory locations, and status information.</p> <p>For example:</p> <p>Press <code>ENTER</code>.</p> <p>Click <code>OK</code>.</p>
bold	<p>Any time this document refers to a labelled user interface option, such as descriptions of the choices in a dialog box, that option appears in the Bold text style.</p> <p>Examples:</p> <p>Enable the DHCP checkbox.</p> <p>Access the Telnet Client Session menu.</p>
<i>italics</i>	<p>Italicized text is used to indicate the name of a window or dialog box.</p> <p>For example:</p> <p>The <i>Update Utility</i> dialog box.</p> <p>The <i>Profile Manager</i> dialog box.</p>

Table 1: *Text-Formatting Conventions*

About Avalanche MC Reporting Tool

The Avalanche MC Reporting Tool offers the following types of reports:

- Mobile Device Inventory
- Mobile Device Summary
- Infra Device Inventory
- Software Profile
- Software Profile Status
- Event Summary

- Access Point Associations
- Mobile Device Roaming
- Battery Summary
- Mobile Device Statistics

For more information about each type of report, refer to [Chapter 2: Building Reports](#) on page 13 and [Chapter 3: Viewing and Exporting Reports](#) on page 31.

Installation

This section provides information about installing the Reporting Tool, including:

- Installation Requirements
- Installing Avalanche MC Reporting Tool

Installation Requirements

This section lists the hardware and software requirements that the Reporting Tool requires for best performance.

Hardware Requirements

The Reporting Tool requires the following hardware components to operate effectively:

- Intel Pentium 4 Processor at 2.8 GHz (or equivalent).
- 1.5 GB RAM
- 2 GHz and above
- 100 GB free disk space

NOTE You must be logged onto the computer on an account with Administrator privileges to run the installer.

Software Requirements

The Reporting Tool requires one of the following operating systems to run effectively:

- Windows 2000 Server (SP 4)
- Windows 2000 Professional (SP 4)
- Windows 2003 Server (SP 1)
- Windows XP (SP 2)

NOTE You must have Wavelink Avalanche MC 4.2 (or later versions) installed to run the Reporting Tool.

Installing Avalanche MC Reporting Tool

The Reporting Tool installation package also contains the components to run the Reporting Tool and Apache Tomcat installation. Apache Tomcat provides an environment for the Java code to run in cooperation with a Web server.

NOTE You must install the Reporting Tool on the same system where the Avalanche MC Console resides.

To install the Reporting Tool:

- 1** Obtain the Reporting Tool installation package from Wavelink Customer Service or the [Wavelink Web site](#).
- 2** Double-click the file to start the installation process.

The *Wavelink Avalanche MC Reports InstallShield Wizard* appears.

- 3** Click `Next` to continue the installation process.

The *License Agreement* dialog box appears.

- 4** If you agree with the terms in the License Agreement, enable the **I accept the terms in the license agreement** option and click `Next`.

NOTE If you do not select this option, you will not be able to complete the installation process.

The *Destination Folder* dialog box appears.

- 5 Click `Next` to accept the default installation folder, or click `Change` to navigate to a folder of your choice. After you select an installation folder, click `Next` to continue the installation process.

The *Setup Type* dialog box appears.

- 6 Choose a **Complete** or **Custom** installation and click `Next`.

NOTE For full functionality, it is recommended that you choose the **Complete** installation.

The *Ready to Install the Program* dialog box appears.

- 7 Click `Install`.

The *Apache Tomcat Setup Wizard* appears.

- 8 Click `Next` to continue with the Apache Tomcat installation.

The *License Agreement* appears.

- 9 If you agree with the terms in the License Agreement, click `I Agree`.

NOTE If you do not click `I Agree`, you will not be able to complete the installation process.

The *Choose Components* dialog box appears.

- 10 Select an installation type and click `Next`.

NOTE For full functionality, it is recommended that you choose the `Normal` installation.

The *Choose Install Location* dialog box appears.

- 11 Click `Next` to accept the default installation folder, or click `Browse` to navigate to a folder of your choice. After you select an installation folder, click `Next` to continue the installation process.

The *Configuration* dialog box appears.

- 12 Enter the **Connector Port**, **User Name** and **Password** in the available text boxes and click `Next`.

NOTE The default port is 8080, however, you can use any port you desire.

NOTE The user name and password are for Apache Tomcat server administration only; they do not apply to Wavelink Avalanche MC.

The *Java Virtual Machine path selection* dialog box appears.

- 13 Click `Install` to accept the default installation location, or click `[. . .]` to navigate to a location of your choice.

Apache Tomcat and Wavelink Avalanche MC Reporting Tool are installed on your system.

- 14 Click `Finish` to close the *Apache Tomcat Setup Wizard*.
- 15 Click `Finish` to close the *Wavelink Avalanche MC Reports InstallShield Wizard*.

Avalanche MC Report Console

This section provides information about using the Report Console, including:

- Accessing the Report Console
- Scheduled Reports
- Reports Now Available
- Report Preferences

Accessing the Report Console

You can access the Report Console through the Avalanche MC Console.

To access the Report Console:

- 1 Open the Avalanche MC Console.
- 2 Click the Reports icon

-Or-

Select `Tools > Reports`

The Report Console opens in a separate Web browser window.

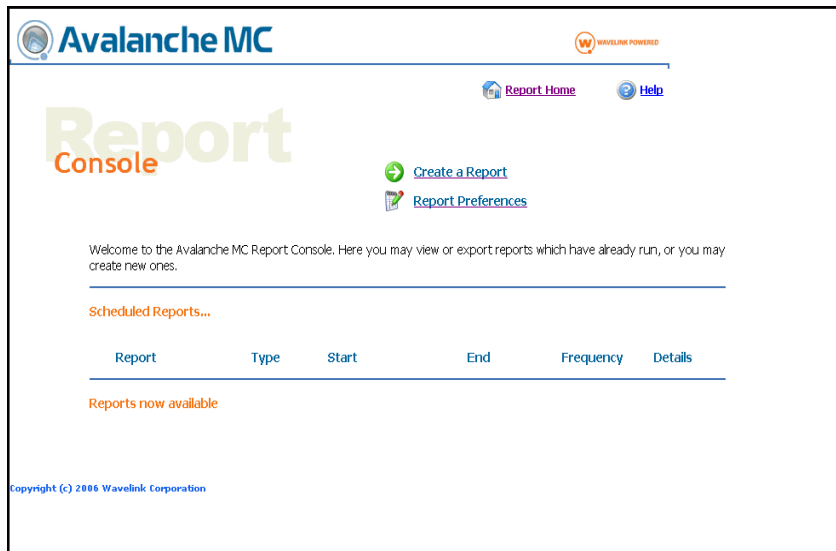


Figure 1-1. *Avalanche MC Report Console*

Scheduled Reports

The **Scheduled Reports** region of the Report Console lists all scheduled reports. These include reports that are scheduled to run at a future time or date, and recurring reports. The following information is provided:

Report	Displays the type of report.
Type	Indicates whether the report is based on location or device group.
Start	Indicates the time the report began processing.
End	Indicates the time the report processing completed.
Frequency	Displays how often the report is scheduled to run.
Details	Provides a link to the summary page for the report.

Reports Now Available

As reports are completed, they are filed by category under the **Reports now available** region of the Report Console. Click any folder to view the available reports for that category. The following information is provided:

Name	Displays the type of report.
Type	Indicates whether the report is based on location or device group.
Created	Displays the date and time the report was created.
Scope	Indicates the location or group the report was generated from.

You can also use the icons to the right of the screen to **View** or **Delete** any report

Report Preferences

The Report Preferences option allows you to establish default report settings for the Report Console.

To change report preferences:

- 1 Select Report Preferences.

A new Web browser page appears. The following options are available:

Purge Reports Enable this checkbox and enter a number in the **Purge Report older than (in days)** text box to have the Report Console automatically delete reports after a given time period.

Generate Charts in 3D Enable this checkbox to generate three-dimensional report graphics.

2 Click `Apply` to save your changes.

Chapter 2: Building Reports

The Report Console allows you to build reports using criteria that you set. You can determine what type of report to create, the scope of the report, and when to run the report.

This chapter provides information about building the following:

- Mobile Device Inventory Report
- Mobile Device Summary Report
- Infra Device Inventory Report
- Software Profile Report
- Software Profile Status Report
- Event Summary Report
- Access Point Associations Report
- Mobile Device Roaming Report
- Battery Summary Report
- Mobile Device Statistics Report

Mobile Device Inventory Report

Mobile Device Inventory Reports provide specific information about your mobile device inventory. For more information, see *Mobile Device Inventory Report* on page 32.

To build a Mobile Device Inventory Report:

- 1 Access the Report Console.
- 2 Click `Create a Report...`

The *Select the Report Type* page appears.

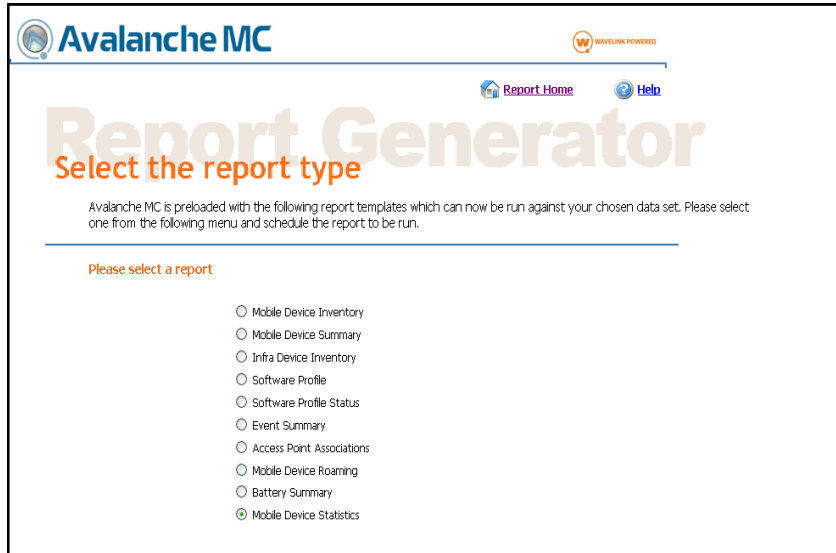


Figure 2-1. *Selecting the Report Type*

- 3** In the list of available reports, enable the **Mobile Device Inventory** option and click **Next**.

The *Defining the Scope* page appears.

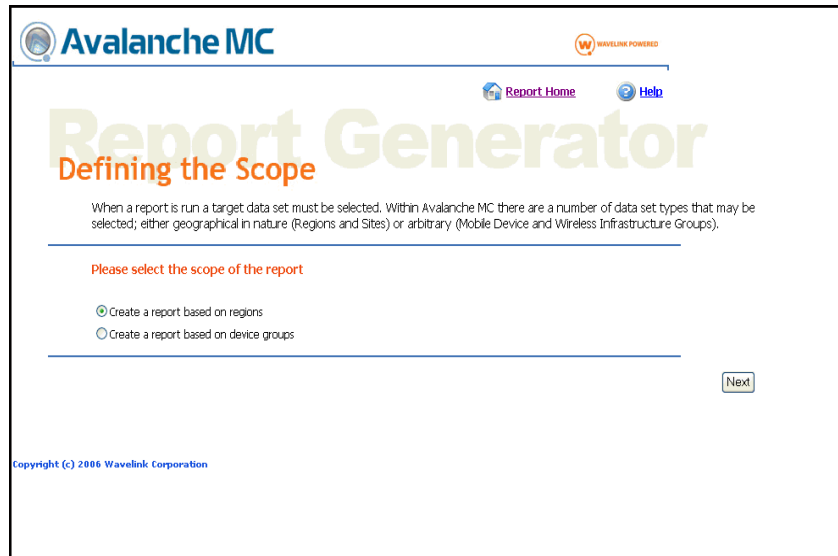


Figure 2-2. *Defining the Scope*

4 Select whether to **Create a report based on regions** or **Create a report based on device groups** and click **Next**.

5 If you selected **Create a report based on regions**, select the desired region(s) and dServer Location(s).

-Or-

If you selected **Create a report based on device groups**, select the desired group(s).

6 Click **Next**.

The *Scheduling* page appears.

Avalanche MC W WAVELINK POWERED

[Report Home](#) [Help](#)

Report Generator

Scheduling

Reports can be scheduled to run immediately or at any time in the future. They may also be scheduled to repeat at given intervals. Be aware too that some reports can take a while to run, so look for their estimated completion times back on the reports home page.

If you have a recurring report, then the time each report runs each day/week/month will either be the time now (if you selected Immediately) or the time specified in the Time field.

Starting time

Immediately

Specific date and time - - :

Recurring times

Run once only

Run every day

Run every week Sun Mon Tues Weds Thurs Fri Sat

Run every month day of each month.

Figure 2-3. *Scheduling*

7 Determine when the event will occur and click `Next`.

- If you want the event to occur immediately, enable the **Immediately** option.
- If you want the event to occur at some point in the future, enable the **Specific date and time** option and enter the start date and time in the available text boxes.

NOTE Time must be entered in 24-hour mode.

- If you want the event to occur continuously, select one of the available **Recurring times** options.

The *Summary* page appears, displaying the report name, format, scope, and report type.



Figure 2-4. Summary

- 8 Click the link next to **Report name** to access the report.

The report appears in PDF format. You can save the report or return to the Report Console home page.

Mobile Device Summary Report

Mobile Device Summary Reports provide general information about the mobile devices being managed by your system. For more information, see *Mobile Device Summary Report* on page 33.

To build a Mobile Device Summary Report:

- 1 Access the Report Console.
- 2 Click Create a Report....

The *Select the Report Type* page appears.

- 3 In the list of available reports, enable the **Mobile Device Summary** option and click Next.

The *Defining the Scope* page appears.

4 Select **Create a report based on regions** or **Create a report based on device groups** and click *Next*.

5 If you selected **Create a report based on regions**, select the desired region(s) and dServer Location(s).

-Or-

If you selected **Create a report based on device groups**, select the desired group(s).

6 Click *Next*.

The *Scheduling* page appears.

7 Determine when the event will occur and click *Next*.

- If you want the event to occur immediately, enable the **Immediately** option.
- If you want the event to occur at some point in the future, enable the **Specific date and time** option and enter the start date and time in the available text boxes.

NOTE Time must be entered in 24-hour mode.

- If you want the event to occur continuously, select one of the available **Recurring times** options.

The *Summary* page appears, displaying the report name, format, scope, and report type.

8 Click the link next to **Report name** to access the report.

The report appears in PDF format. You can save the report or return to the Report Console home page.

Infra Device Inventory Report

Infra Device Inventory Reports provide detailed information about your access points and switches. For more information, see *Infra Device Inventory Report* on page 33.

To build an Infra Device Inventory Report:

- 1 Access the Report Console.
- 2 Click `Create a Report...`

The *Select the Report Type* page appears.

- 3 In the list of available reports, enable the **Infra Device Inventory** option and click `Next`.

The *Defining the Scope* page appears.

- 4 Select the desired region by enabling the checkbox next to the region name and click `Next`.

- 5 Select the desired dServer Location(s) and click `Next`.

The *Scheduling* page appears.

- 6 Determine when the event will occur and click `Next`.
 - If you want the event to occur immediately, enable the **Immediately** option.
 - If you want the event to occur at some point in the future, enable the **Specific date and time** option and enter the start date and time in the available text boxes.

NOTE Time must be entered in 24-hour mode.

- If you want the event to occur continuously, select one of the available **Recurring times** options.

The *Summary* page appears, displaying the report name, format, scope, and report type.

- 7 Click the link next to **Report name** to access the report.

The report appears in PDF format. You can save the report or return to the Report Console home page.

Software Profile Report

Software Profile Reports display the status of your software profiles. For more information, see *Software Profile Report* on page 33.

To build a Software Profile Report:

- 1 Access the Report Console.
- 2 Click `Create a Report...`

The *Select the Report Type* page appears.

- 3 In the list of available reports, enable the **Software Profiles** option and click `Next`.

The *Defining the Scope* page appears.

- 4 Select the desired region by enabling the checkbox next to the region name and click `Next`.

The *Scheduling* page appears.

- 5 Determine when the event will occur and click `Next`.
 - If you want the event to occur immediately, enable the **Immediately** option.
 - If you want the event to occur at some point in the future, enable the **Specific date and time** option and enter the start date and time in the available text boxes.

NOTE Time must be entered in 24-hour mode.

- If you want the event to occur continuously, select one of the available **Recurring times** options.

The *Summary* page appears, displaying the report name, format, scope, and report type.

- 6 Click the link next to **Report name** to access the report.

The report appears in PDF format. You can save the report or return to the Report Console home page.

Software Profile Status Report

Software Profile Status Reports provide a summary of software installation, including which software packages failed, succeeded, and which packages are still pending. For more information, see *Software Profile Status Report* on page 34.

To build a Software Profile Status report:

- 1 Access the Report Console.
- 2 Click `Create a Report...`

The *Select the Report Type* page appears.

- 3 In the list of available reports, enable the **Software Profile Status** option and click `Next`.

The *Defining the Scope* page appears.

- 4 Select the desired region by enabling the checkbox next to the region name and click `Next`.

The *Scheduling* page appears.

- 5 Determine when the event will occur and click `Next`.
 - If you want the event to occur immediately, enable the **Immediately** option.
 - If you want the event to occur at some point in the future, enable the **Specific date and time** option and enter the start date and time in the available text boxes.

NOTE Time must be entered in 24-hour mode.

- If you want the event to occur continuously, select one of the available **Recurring times** options.

The *Summary* page appears, displaying the report name, format, scope, and report type.

- 6 Click the link next to **Report name** to access the report.

The report appears in PDF format. You can save the report or return to the Report Console home page.

Event Summary Report

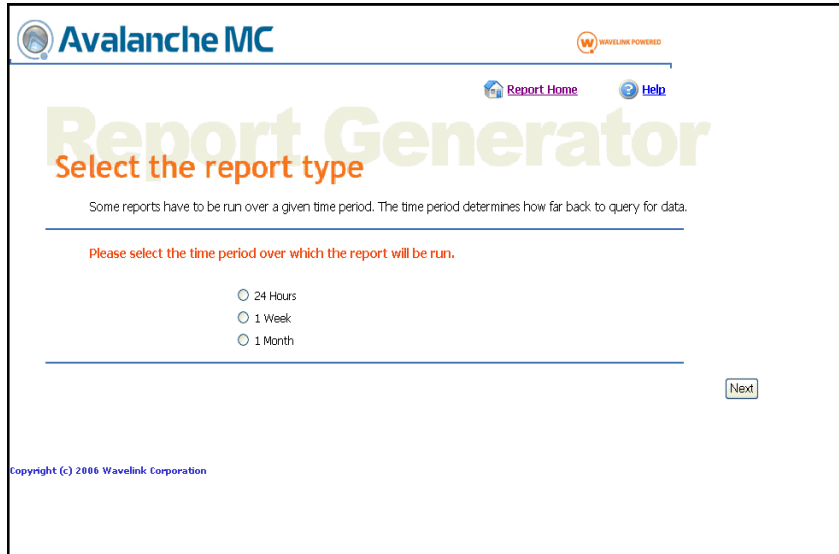
Event Summary Reports provide a summary of Avalanche MC Console alerts that occurred over a given time period. You can view the severity of the alert and whether the alert was acknowledged and cleared. For more information, see *Event Summary Report* on page 34.

To build an Event Summary Report:

- 1 Access the Report Console.
- 2 Click `Create a Report....`

The *Select the Report Type* page appears.

- 3 In the list of available reports, enable the **Event Summary** option and click `Next`.
- 4 Select the time period over which the report will be run and click `Next`.



The screenshot shows the 'Report Generator' interface for 'Avalanche MC'. At the top left is the 'Avalanche MC' logo. At the top right is the 'WAVELINK POWERED' logo. Below the logo is a navigation bar with 'Report Home' and 'Help' links. The main heading is 'Report Generator' in large green letters, with 'Select the report type' in orange below it. A sub-heading reads: 'Some reports have to be run over a given time period. The time period determines how far back to query for data.' Below this is a horizontal line, followed by the instruction: 'Please select the time period over which the report will be run.' There are three radio button options: '24 Hours', '1 Week', and '1 Month'. A 'Next' button is located at the bottom right. At the bottom left, there is a copyright notice: 'Copyright (c) 2006 Wavelink Corporation'.

Figure 2-5. *Selecting the Time Period*

The *Defining the Scope* page appears.

- 5 Select the desired region by enabling the checkbox next to the region name and click `Next`.
- 6 Select the desired dServer Location(s) and click `Next`.

The *Scheduling* page appears.

- 7 Determine when the event will occur and click `Next`.
 - If you want the event to occur immediately, enable the **Immediately** option.
 - If you want the event to occur at some point in the future, enable the **Specific date and time** option and enter the start date and time in the available text boxes.

NOTE Time must be entered in 24-hour mode.

- If you want the event to occur continuously, select one of the available **Recurring times** options.

The Summary page appears, displaying the report name, format, scope, and report type.

- 8 Click the link next to **Report name** to access the report.

The report appears in PDF format. You can save the report or return to the Report Console home page.

Access Point Associations Report

Access Point Associations Reports show all connections between mobile devices and access points. For more information, see *Access Point Associations Report* on page 34.

To build an Access Point Association Report:

- 1 Access the Report Console.

- 2 Click `Create a Report...`

The *Select the Report Type* page appears.

- 3 In the list of available reports, enable the **Access Point Associations** option and click `Next`.

- 4 Select the time period over which the report will be run and click `Next`.

The *Defining the Scope* page appears.

- 5 Select the desired region by enabling the checkbox next to the region name and click `Next`.

- 6 Select the desired dServer Location(s) and click `Next`.

The *Scheduling* page appears.

- 7 Determine when the event will occur and click `Next`.

- If you want the event to occur immediately, enable the **Immediately** option.

- If you want the event to occur at some point in the future, enable the **Specific date and time** option and enter the start date and time in the available text boxes.

NOTE Time must be entered in 24-hour mode.

- If you want the event to occur continuously, select one of the available **Recurring times** options.

The Summary page appears, displaying the report name, format, scope, and report type.

- 8** Click the link next to **Report name** to access the report.

The report appears in PDF format. You can save the report or return to the Report Console home page.

Mobile Device Roaming Report

Mobile Device Roaming Reports show which mobile devices have roamed from one dServer to another. You can also view the number of times each device has roamed, along with the time and date of the last device roam. For more information, see *Mobile Device Roaming Report* on page 35.

To build a Mobile Device Roaming Report:

- 1** Access the Report Console.

- 2** Click `Create a Report...`

The *Select the Report Type* page appears.

- 3** In the list of available reports, enable the **Mobile Device Roaming** option and click `Next`.

- 4** Select the time period over which the report will be run and click `Next`.

The *Defining the Scope* page appears.

- 5** Select **Create a report based on regions** or **Create a report based on device groups** and click `Next`.

6 If you selected **Create a report based on regions**, select the desired region(s) and dServer Location(s).

-Or-

If you selected **Create a report based on device groups**, select the desired group(s).

7 Click `Next`.

The *Scheduling* page appears.

8 Determine when the event will occur and click `Next`.

- If you want the event to occur immediately, enable the **Immediately** option.
- If you want the event to occur at some point in the future, enable the **Specific date and time** option and enter the start date and time in the available text boxes.

NOTE Time must be entered in 24-hour mode.

- If you want the event to occur continuously, select one of the available **Recurring times** options.

The *Summary* page appears, displaying the report name, format, scope, and report type.

9 Click the link next to **Report name** to access the report.

The report appears in PDF format. You can save the report or return to the Report Console home page.

Battery Summary Report

Battery Summary Reports display mobile device battery charge information. For more information, see *Battery Summary Report* on page 35.

To build a Battery Summary Report:

1 Access the Report Console.

2 Click **Create a Report...**

The *Select the Report Type* page appears.

3 In the list of available reports, enable the **Battery Summary** option and click **Next**.

4 Select the time period over which the report will be run and click **Next**.

The *Defining the Scope* page appears.

5 Select **Create a report based on regions** or **Create a report based on device groups** and click **Next**.

6 If you selected **Create a report based on regions**, select the desired region(s) and dServer Location(s).

-Or-

If you selected **Create a report based on device groups**, select the desired group(s).

7 Click **Next**.

The *Scheduling* page appears.

8 Determine when the event will occur and click **Next**.

- If you want the event to occur immediately, enable the **Immediately** option.
- If you want the event to occur at some point in the future, enable the **Specific date and time** option and enter the start date and time in the available text boxes.

NOTE Time must be entered in 24-hour mode.

- If you want the event to occur continuously, select one of the available **Recurring times** options.

The *Summary* page appears, displaying the report name, format, scope, and report type.

- 9 Click the link next to **Report name** to access the report.

The report appears in PDF format. You can save the report or return to the Report Console home page.

Mobile Device Statistics Report

Mobile Device Statistics Reports provide information about network radio performance. For more information, see *Mobile Device Statistics Report* on page 36.

To build a Mobile Device Statistics Report:

- 1 Access the Report Console.

- 2 Click `Create a Report....`

The *Select the Report Type* page appears.

- 3 In the list of available reports, enable the **Mobile Device Statistics** option and click `Next`.

- 4 Select the time period over which the report will be run and click `Next`.

The *Defining the Scope* page appears.

- 5 Select **Create a report based on regions** or **Create a report based on device groups** and click `Next`.

- 6 If you selected **Create a report based on regions**, select the desired region(s) and dServer Location(s).

-Or-

If you selected **Create a report based on device groups**, select the desired group(s).

- 7 Click `Next`.

The *Scheduling* page appears.

- 8 Determine when the event will occur and click `Next`.

- If you want the event to occur immediately, enable the **Immediately** option.

- If you want the event to occur at some point in the future, enable the **Specific date and time** option and enter the start date and time in the available text boxes.

NOTE Time must be entered in 24-hour mode.

- If you want the event to occur continuously, select one of the available **Recurring times** options.

The *Summary* page appears, displaying the report name, format, scope, and report type.

- 9** Click the link next to **Report name** to access the report.

The report appears in PDF format. You can save the report or return to the Report Console home page.

Chapter 3: Viewing and Exporting Reports

Use the Avalanche MC Reporting Tool to view reports you have created and save reports in a PDF format for future use.

This chapter provides the following information:

- Viewing Reports
- Exporting Reports

Viewing Reports

You can view any report by clicking the **View** icon to the right of the report name in the **Reports now available region** of the Report Console. Each report provides general information and information specific to the report type. This section provides information about viewing the following:

- General Report Information
- Mobile Device Inventory Report
- Mobile Device Summary Report
- Infra Device Inventory Report
- Software Profile Report
- Software Profile Status Report
- Event Summary Report
- Access Point Associations Report
- Mobile Device Roaming Report
- Battery Summary Report
- Battery Summary Report
- Mobile Device Statistics Report

General Report Information

Each report contains the following:

- Header Information
- Graphs

Header Information

General report information, such as execution time and report criteria, appears in the header of each report. This information varies by report.

Graphs

All reports provide a graph, which displays a visual summary of all information contained in the report.

Mobile Device Inventory Report

The Mobile Device Inventory Report contains the following information:

dServer Location	Displays the location of the dServer Location the mobile device is communicating with.
Vendor	Displays the name of the device vendor.
Model	Displays the model number of the device.
OS Load	Indicates the operating system currently running on the device.
MAC	Displays the Media Access Control address of the mobile device.
Enabler	Indicates the version of the Enabler running on the device.
IP Address	Displays the Internet Protocol address assigned to the device.
State	Indicates whether the device is updated or needs to be updated.

Mobile Device Summary Report

The Mobile Device Summary Report contains the following information:

Vendor	Displays the name of the device vendor.
Model	Displays the model number of the device.
OS Version	Indicates the operating system currently running on the device.
Qty	Displays the number of devices.

Infra Device Inventory Report

The Infra Device Inventory Report contains the following information:

dServer Location	Displays the location of the dServer Location the mobile device is communicating with.
Vendor	Displays the name of the device vendor.
Model	Displays the model number of the device.
Firmware	Indicates the firmware currently running on the device.
IP Address	Displays the Internet Protocol address assigned to the device.
MAC Address	Displays the Media Access Control address of the mobile device.
Status	Indicates the status of the connection attempt.

Software Profile Report

The Software Profile Report contains the following information:

Profile Name	Displays the name of the software profile.
Criteria	Displays the selection criteria associated with the profile.
Targets	Indicates the number of devices matching the profile selection criteria.
Installed	Indicates the number of devices that have the profile installed.

Pending	Indicates the number of devices pending the profile install.
Failed	Indicates the number of devices that failed to install the profile.

Software Profile Status Report

The Software Profile Status Report contains the following information:

IP Address	Displays the Internet Protocol address assigned to the device.
Manufacturer	Displays the name of the device manufacturer.
Enabler	Indicates the version of the Enabler running on the device.
dServer Location	Displays the location of the dServer Location the mobile device is communicating with.
Status	Indicates the status of the connection attempt.
Time	Indicates the time and date of the connection attempt.

Event Summary Report

The Event Summary Report contains the following information:

Time	Displays the time the alert occurred.
Name	Displays the name of the alert.
Description	Displays the type of alert.
Severity	Indicates the alert level.
Acked	Indicates whether the alert has been acknowledged in the Avalanche MC Console.
Cleared	Indicates whether the alert has been cleared from the Avalanche MC Console.

Access Point Associations Report

The Access Point Associations Report contains the following information:

IP Address	Displays the Internet Protocol address assigned to the device.
MAC Address	Displays the Media Access Control address of the mobile device.
Manufacturer	Displays the name of the device manufacturer.

dServer Location	Displays the location of the dServer Location the mobile device is communicating with.
Associations	Indicates the number of times a device connected with the access point.
Reassociations	Indicates the number of times a device re-connected with the access point.

Mobile Device Roaming Report

The Mobile Device Roaming Report contains the following information:

IP Address	Displays the Internet Protocol address assigned to the device.
Manufacturer	Displays the name of the device manufacturer.
Enabler	Indicates the version of the Enabler running on the device.
Current dServer Location	Displays the location of the dServer Location the mobile device is currently communicating with.
Last dServer Location	Displays the location of the dServer Location the mobile device was communicating with previously.
# Roams	Indicates the number of times the mobile device has roamed.
Last Roam	Displays the date and time of the last roaming incident.

Battery Summary Report

The Battery Summary Report contains the following information:

IP Address	Displays the Internet Protocol address assigned to the device.
Manufacturer	Displays the name of the device manufacturer.
Enabler	Displays the version of the Enabler running on the device.
Current dServer Location	Displays the location of the dServer Location the mobile device is currently communicating with.
Avg. Charge Duration	Indicates the average amount of time the mobile device battery holds a charge.
Bad Charge Events	Indicates the number of times the device failed to charge.

Mobile Device Statistics Report

The Mobile Device Statistics Report contains the following information:

BSSID	Displays the Basic Service Set Identifier of the mobile device.
Total Bytes	Displays the total number of bytes sent.
Avg Bytes	Displays the average number of bytes sent.
Total Packets	Displays the total number of packets received.
Avg Packets	Displays the average number of packets received.
Total Errors	Displays the total number of network errors.
Avg Errors	Displays the average number of network errors.

Exporting Reports

All reports can be exported from the Report Console and saved in PDF format for future use.

To export a report:

- 1 Access the Report Console.
- 2 From the **Reports now available** region, select the desired folder.
- 3 Click the View icon to the right of the desired report.

The report appears in the browser window.

- 4 Select `File > Save As`.
- 5 Navigate to the desired location and click `Save`.

The report is saved to the location you selected.

Index

A

- about Reporting Tool 4
- Access Point Associations Report
 - building 24
 - viewing 34
- accessing Report Console 9

B

- Battery Summary Report
 - building 26
 - viewing 35
- building
 - Access Point Associations Report 24
 - Battery Summary Report 26
 - Event Summary Report 22
 - Infra Device Inventory Report 18
 - Mobile Device Inventory Report 13
 - Mobile Device Roaming Report 25
 - Mobile Device Statistics Report 28
 - Mobile Device Summary Report 17
 - Software Profile Report 20
 - Software Profile Status Report 21
- building reports 13

D

- document, conventions 3

E

- Event Summary Report
 - building 22
 - viewing 34
- exporting reports 36

G

- general report information
 - graphs 32
 - header 32
 - viewing 32

H

- hardware requirements 5

I

- Infra Device Inventory Report
 - building 18
 - viewing 33
- installation requirements
 - hardware requirements 5
 - software requirements 5
- installing Reporting Tool 6
- introduction 3

M

- Mobile Device Inventory Report
 - building 13
 - viewing 32
- Mobile Device Roaming Report
 - building 25
 - viewing 35
- Mobile Device Statistics Report
 - building 28
 - viewing 36
- Mobile Device Summary Report
 - building 17
 - viewing 33

R

- Report Console, accessing 9
- report preferences 10
- Reporting Tool
 - about 4
 - installing 6
- reports
 - building 13
 - exporting 36
 - viewing 31
- reports now available 10

- requirements
 - hardware 5
 - software 6

S

- scheduled reports 10
- Software Profile Report
 - building 20
 - viewing 33
- Software Profile Status Report
 - building 21
 - viewing 34
- software requirements 6

V

- viewing
 - Access Point Associations Report 34
 - Battery Summary Report 35
 - Event Summary Report 34
 - general report information 32
 - Infra Device Inventory Report 33
 - Mobile Device Inventory Report 32
 - Mobile Device Roaming Report 35
 - Mobile Device Statistics Report 36
 - Mobile Device Summary Report 33
 - Software Profile Report 33
 - Software Profile Status Report 34
- viewing reports 31