



MIGRATING FROM AVALANCHE SE 4.7 TO AVALANCHE MC 4.8

This document provides instructions for migrating to Avalanche MC 4.8.

This document provides instructions for migrating from Avalanche Site Edition (Avalanche SE) 4.7 to Avalanche Mobility Center (Avalanche MC) 4.8.

OVERVIEW

This document contains the following sections:

- Overview
- Installing Avalanche MC 4.8
- Components Migrated
- Document History

OVERVIEW

Avalanche MC 4.8 provides additional functionality (including infrastructure support) for your system. The 4.8 installation removes Avalanche SE and migrates your database and software collections to the new version of Avalanche MC. The database and software collections are automatically backed up before Avalanche SE is uninstalled.

This document provides the following information:

- Installing Avalanche MC 4.8
- Components Migrated
- Document History

INSTALLING AVALANCHE MC 4.8

You can install Avalanche MC 4.8 without manually uninstalling Avalanche SE. Avalanche MC 4.8 uninstalls Avalanche SE automatically.

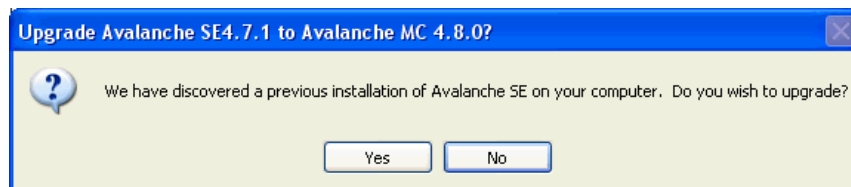
After the installation is complete, a log file called `migration.log` is placed in the default installation directory. This log file contains details of the migration and the components migrated.

NOTE: Once you install Avalanche MC 4.8, you may need to obtain new licensing based on your Mobile Device and Infrastructure licenses. Contact Wavelink Customer Service at 1-888-697-9283 for more information.

To install Avalanche MC 4.8:

1. Obtain the Avalanche MC 4.8 installation file from Wavelink..
2. Double-click the file to start the installation process.

The InstallShield Wizard launches and an *Upgrade* dialog box appears asking if you want to upgrade.



Upgrade

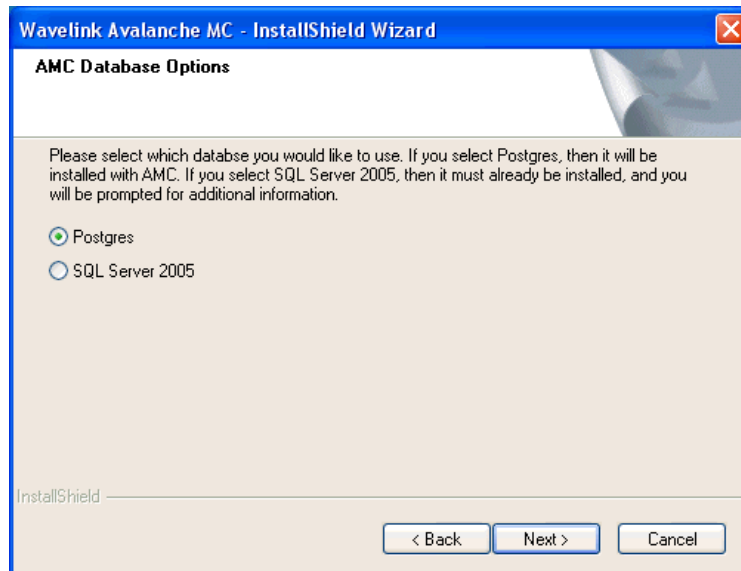


3. Click **Yes**.
A *Welcome* dialog box appears.
4. Click **Next** to continue the installation process.
The *License Agreement* dialog box appears.
5. If you agree with the terms of the License Agreement, click **Yes**.

NOTE: If you do not click **Yes**, you will not be able to complete the installation process.

The *Organization Name* dialog box appears.

6. Enter the name of your organization and then click **Next**.
The *Database Options* dialog box appears.

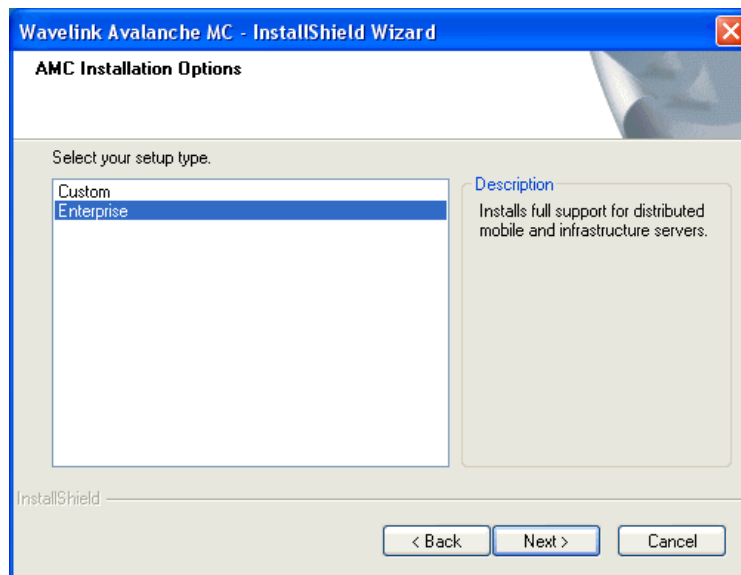


Database Options

7. Ensure that the **Postgres** option is enabled and then click **Next**.

NOTE: Migration to the SQL Server database is not supported.

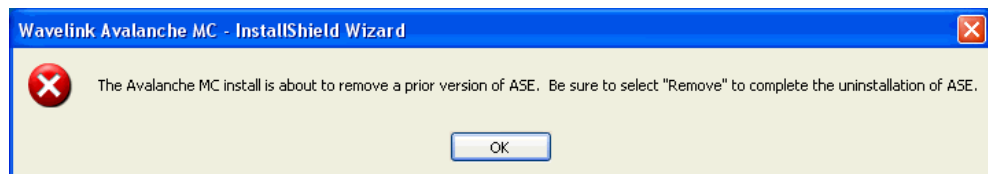
The *Installation Options* dialog box appears.



Installation Options

8. Select which installation type you want to install and then click **Next**.
 - **Custom**. Allows you to select the different components you want to install.
 - **Enterprise**. Installs all components of the software.

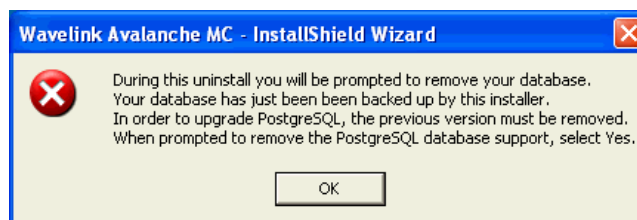
The *Choose Destination Location* dialog box appears.
 9. Click **Next** to accept the default installation folder, or click **Browse** to navigate to a folder of your choice. After you select an installation folder, click **Next** to continue the installation process.
- The installation begins and may take several minutes. A dialog box appears reminding you to remove the previous version of Avalanche SE.



Wavelink Avalanche SE - InstallShield Wizard

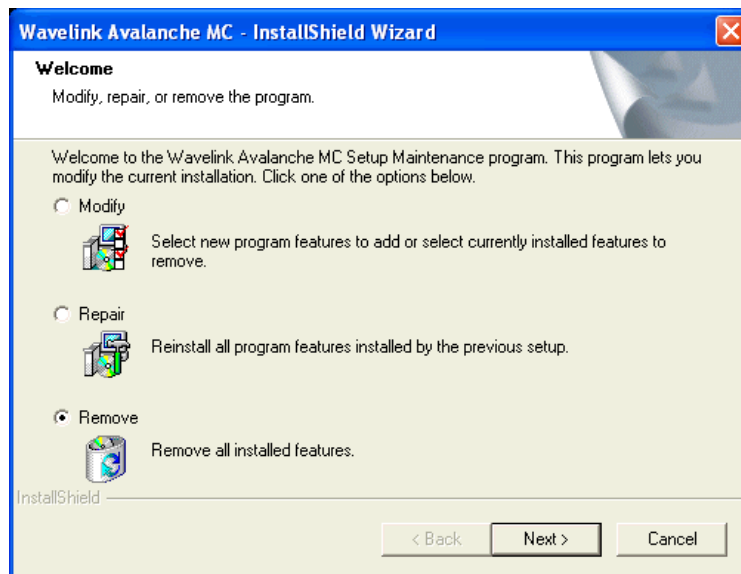
10. Click **OK**.
- A dialog box appears reminding you to remove your database.

NOTE: Removing the database upgrades the PostgreSQL database to version 8.3.



Remote Database Notice

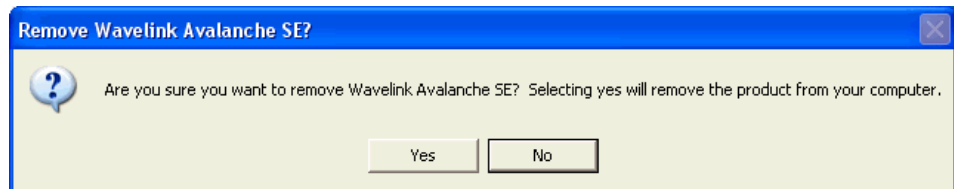
11. Click **OK**.
- A *Welcome* dialog box appears.



Remove installed Items

12. Select the **Remove** option and click **Next** to remove the previous version of Avalanche SE.

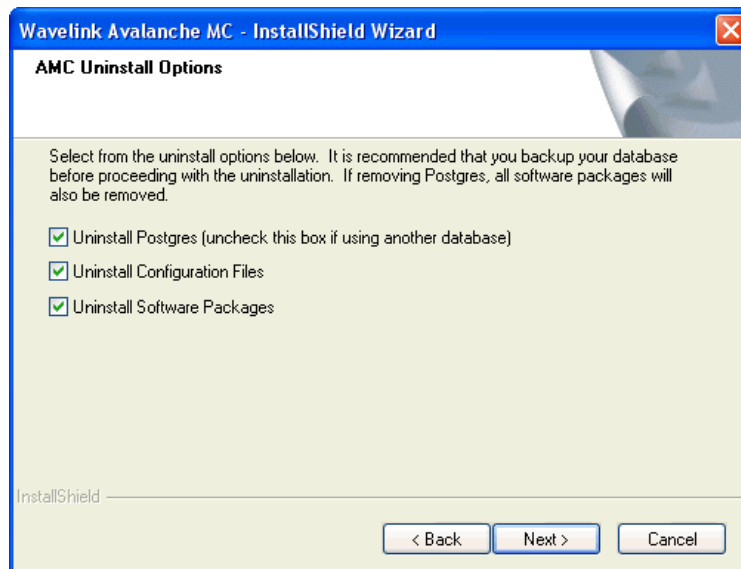
The *Remove Wavelink Avalanche SE?* dialog box appears asking if you are sure you want to remove the software.



Remove Wavelink Avalanche SE?

13. Click **Yes**.

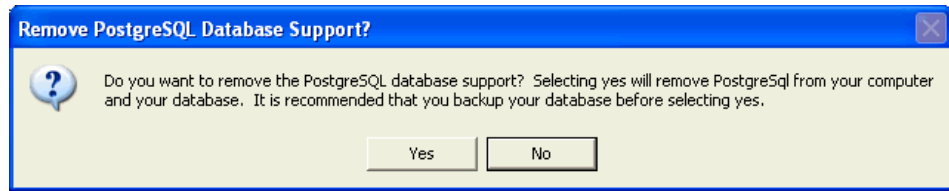
The *Uninstall Options* dialog box appears.



Uninstall Options

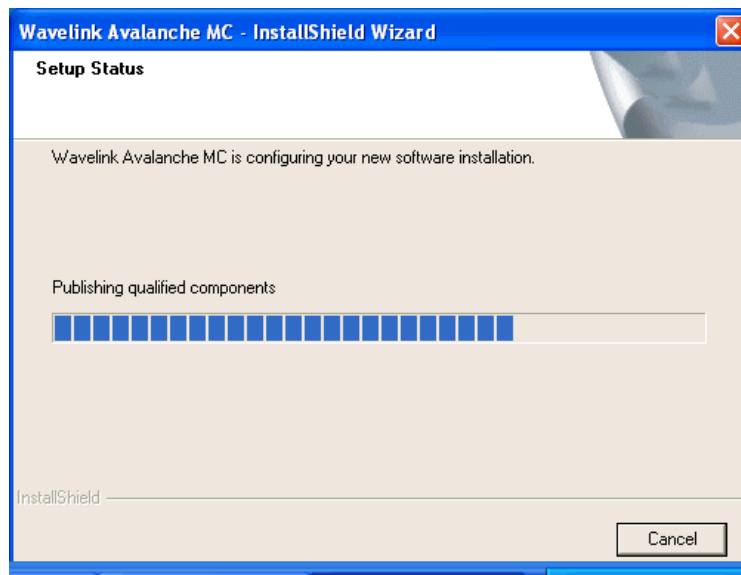
14. Select the components of Avalanche SE that you want to uninstall and click **Next**.

The *Remove PostgreSQL Database Support?* dialog box appears asking if you want to remove the database.



Remove PostgreSQL Database Support?

15. Click **Yes** to upgrade to the latest version of PostgreSQL.
Click **No** to retain the older version of the database.
Avalanche SE and the database are removed and the uninstallation is complete.
16. Click **Finish**.
Avalanche MC 4.8 begins to install. The *Setup Status* dialog box appears.



Setup Status

Avalanche MC and PostgreSQL begins to install.

The `migration.log` file appears just before the installation is completed. This file is for informational use and can be reviewed or closed at your discretion.

17. When the installation is complete, click **Finish**.
Once the installation is complete, you should activate this installation of Avalanche MC for your network. For more information about activating Avalanche MC, refer to *Wavelink Avalanche Mobility Center User's Guide*.

NOTE: Although the Navigation Window in the Console will display a Server Location as well as a deployed Mobile Device Server, these components did not actually migrate. You will need to recreate any Locations as well as create new Server packages and deploy them to any Servers previously created in Avalanche SE. For Infrastructure Servers, you must create the full deployment package, not the lightweight version. For more information about creating and deploying Server packages, refer to the *Wavelink Avalanche MC User Guide*.

COMPONENTS MIGRATED

Review the `migration.log` file located in the default installation directory for a complete list and details of all components migrated.

The following components are migrated:

- Users and Permissions
- Alert Profiles
- Event Log
- Network Profiles
- Software Profiles
- Firmware
- Mobile Device Groups

DOCUMENT HISTORY

- 02/05/2009. Document created.



Wavelink Corporation
6985 Union Park Ave. Suite 335
Midvale, UT 84047
Main: 801-255-9000

www.wavelink.com



Migrating to Avalanche MC 4.8 06