

MIGRATING TO AVALANCHE 5.0 WITH MS SQL SERVER

This document provides instructions for migrating to Avalanche 5.0 from an installation of Avalanche MC 4.6 or newer using MS SQL Server 2005. You can continue to use MS SQL Server 2005 or migrate the database to MS SQL Server 2008.

OVERVIEW

The installer for Avalanche 5.0 removes the previous version of Avalanche and migrates your database and profiles to the new version. The database, profiles, and software packages are automatically backed up before the previous version of Avalanche is uninstalled.

This document provides the following information:

- Before You Begin
- Migrating to Avalanche 5.0
- Components Migrated

BEFORE YOU BEGIN

You must have the following tasks completed before you can migrate to Avalanche 5.0 with an SQL Server database:

- Install Microsoft SQL Server.
- Create the Avalanche databases. The databases must be named `avalanche50` and `avastats50`.

NOTE: You can use MS SQL Server 2005 or 2008 on a different machine than the previous installation, but it must be installed and the databases created before you can begin the migration.

- Create the login role for the databases.
- If you are installing Avalanche in a different location than the database server, you must configure the server to allow remote access.
- Install the Microsoft SQL Server Native Client and SQL Server Command Line Query Tool for your edition of SQL Server on the machine where you will be installing Avalanche.

NOTE: You should use the Client and Query Tool specific to your edition. If you are using SQL Server 2005, these files will be `sqlncli.msi` and `SQLServer2005_SQLCMD.msi`. If you are using SQL Server 2008, these files will be `sqlncli.msi` and `SqlCmdLnUtils.msi`.

MIGRATING TO AVALANCHE 5.0

You can install Avalanche 5.0 without manually uninstalling previous versions of Avalanche. The 5.0 installer uninstalls any previous versions of Avalanche that it discovers, reformats the information in your database, and installs 5.0.

The database tables in Avalanche 5.0 have been consolidated, so the migration process may take longer than a regular installation. The more information you have stored in your database, the longer it will take the installer to reformat it.

NOTE: Once you have begun the migration, Wavelink strongly recommends that you not cancel or interrupt the migration process.

To migrate to Avalanche 5.0:

1. Back up your current version of Avalanche.
2. Obtain the Avalanche 5.0 external database installation file from the Wavelink Sales team.
3. Double-click the file to start the installation process.

An *Upgrade* dialog box appears indicating that there is a previous version of Avalanche installed on your system and asks if you want to upgrade.

4. Click **Yes**.

A *Wavelink Avalanche 5.0.0* dialog box appears.

5. Click **Next** to continue the installation process.

The *License Agreement* screen appears.

6. Click **Yes** to agree with the terms of the License Agreement.

The *Migrating an SQL Server 2005 Database* screen appears.

7. Type the **Hostname** and **Port** for the database that you have been using and click **Next**.

8. Type the **Username** and **Password** for the database and click **Next**.

The installer verifies the credentials for the database.

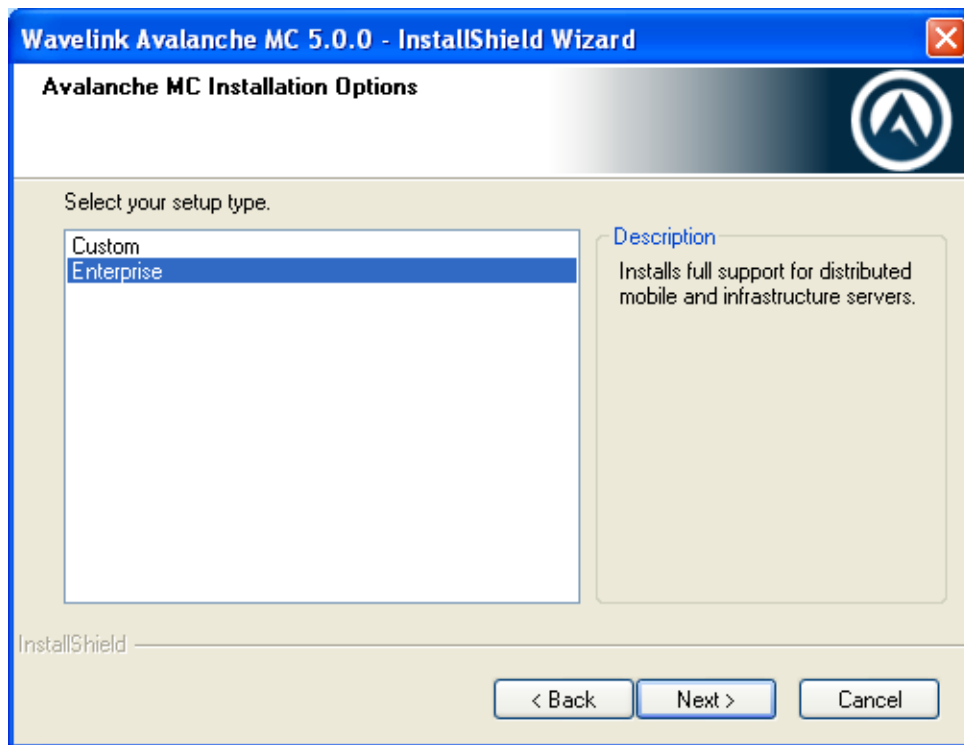
9. A *Continue Using the same SQL Server 2005 Credentials?* dialog box appears asking if you want to use the same credentials for the Avalanche 5.0 databases.

- If you are using the same version of MS SQL Server and the same host, click **Yes**. The *Installation Options* screen appears. Go to step 12.
- If you are using MS SQL Server 2008 or if you have created the new databases on a different host, click **No**.

10. Type the **Hostname** and **Port** for the new database in the text boxes and click **Next**.

11. Type the **Username** and **Password** for the new databases and click **Next**.

The *Installation Options* screen appears.



Installation Options

12. Select which installation type you want to install and then click **Next**.
 - **Custom**. Allows you to choose which components to install. If you choose **Custom** and click **Next**, you will be prompted to select the desired components.
 - **Enterprise**. Installs full support for distributed mobile device and infrastructure servers, the enterprise server, the statistics server, and the databases.

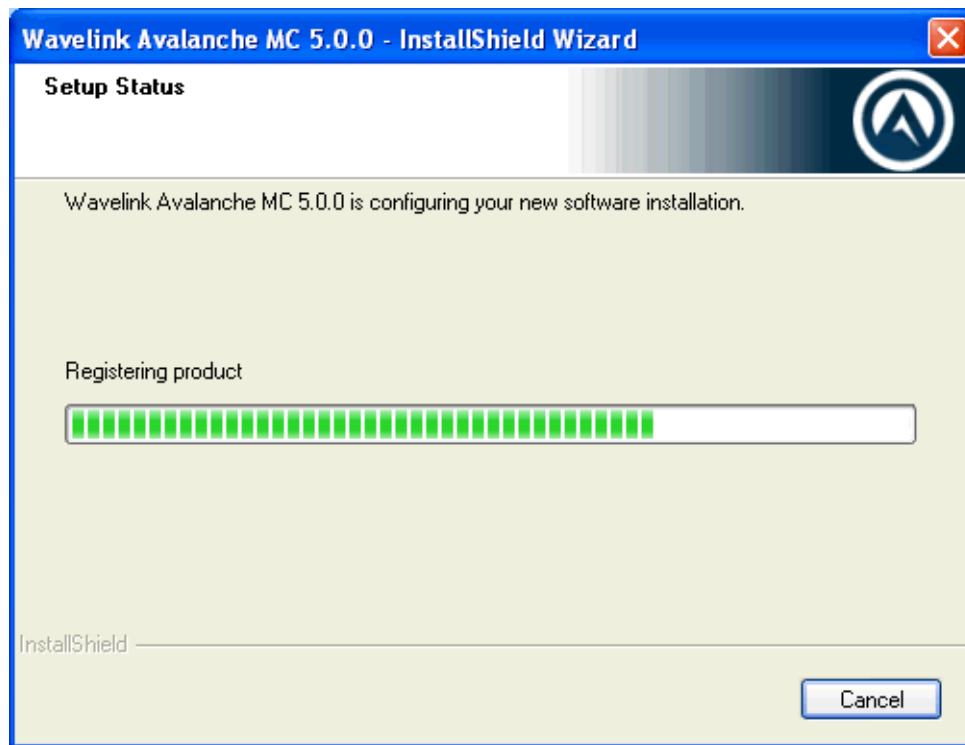
The *Choose Destination Location* screen appears.

13. Click **Next** to accept the default installation folder, or click **Browse** to navigate to a folder of your choice. After you select an installation folder, click **Next** to continue the installation process.

NOTE: Do not change the installation folder.

The database backup and removal of the previous version of Avalanche begins. The size of your database affects how long this takes. Do not cancel or interrupt the migration process. If the migration is interrupted, you may need to call Wavelink Customer Support.

When the older version of Avalanche is uninstalled, Avalanche 5.0 begins to install. The *Setup Status* screen appears.



Setup Status

The `migration.log` file appears just before the installation is completed. This file provides you with a log of the migration process and a list of the components that were migrated.

14. When the installation is complete, you will be prompted to view "How to Install a Secure Certificate." This document will help you understand using https for securing your connection when using the Web Console. Click **Finish** to close the installer.

NOTE: Information on creating and using certificates is also available in the Avalanche User Guide.

15. Open the Avalanche Console and perform a Universal Deployment to re-establish communications with your distributed servers.

Any deployed Mobile Device or Infrastructure Servers will remain active, but as the previous version. To upgrade the servers to the new version, you will need to create and deploy new server packages. When you create Infrastructure Servers, you must create the full deployment package, not the lightweight version.

COMPONENTS MIGRATED

Review the `migration.log` file located in the default installation directory for a complete list and details of all components migrated.

The following components are migrated:

- Users and Permissions (Migrated users are assigned My Enterprise as their home location.)
- Regions
- Sites

- Profiles (Update Profiles will be migrated to Mobile Device Profiles.)
- Firmware
- Mobile Device Groups

Once you install Avalanche 5.0, you may need to obtain new licensing based on your Mobile Device and Infrastructure licenses. Contact Wavelink Customer Service at 1-888-697-9283 for more information.

DOCUMENT HISTORY

- 05/04/2010. Document created.



Wavelink Corporation
6985 Union Park Ave., Suite 335
Midvale, UT 84047-4155
Telephone: 801.316.9000

www.wavelink.com

